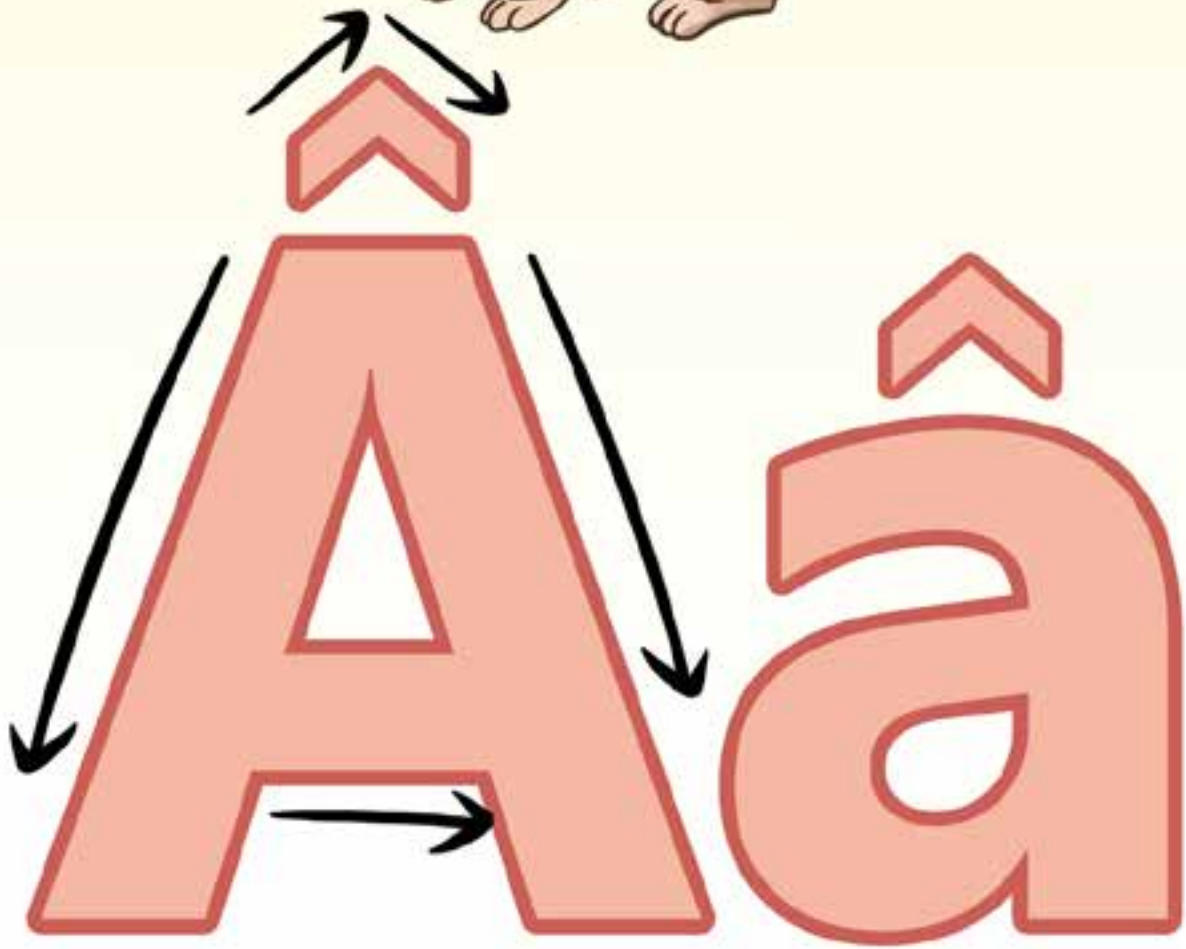
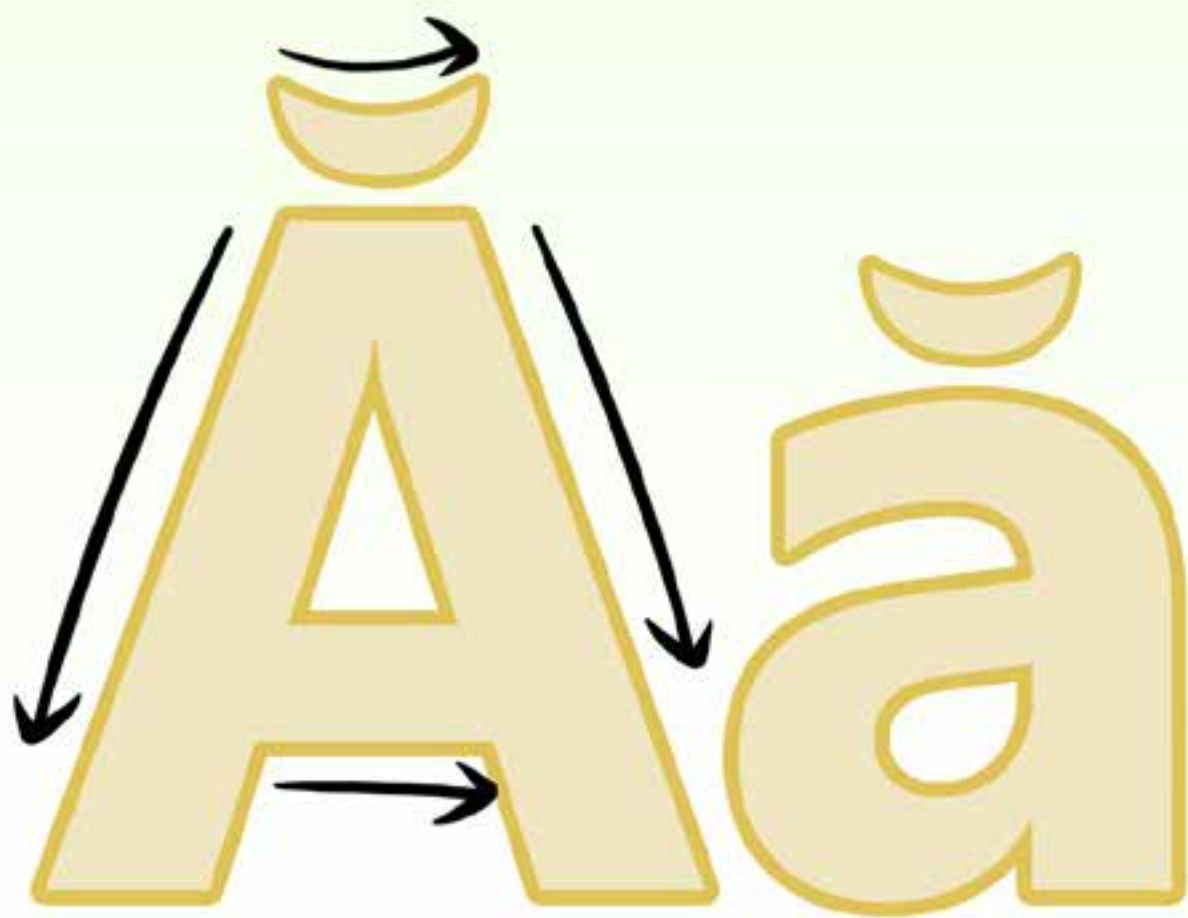




Aa

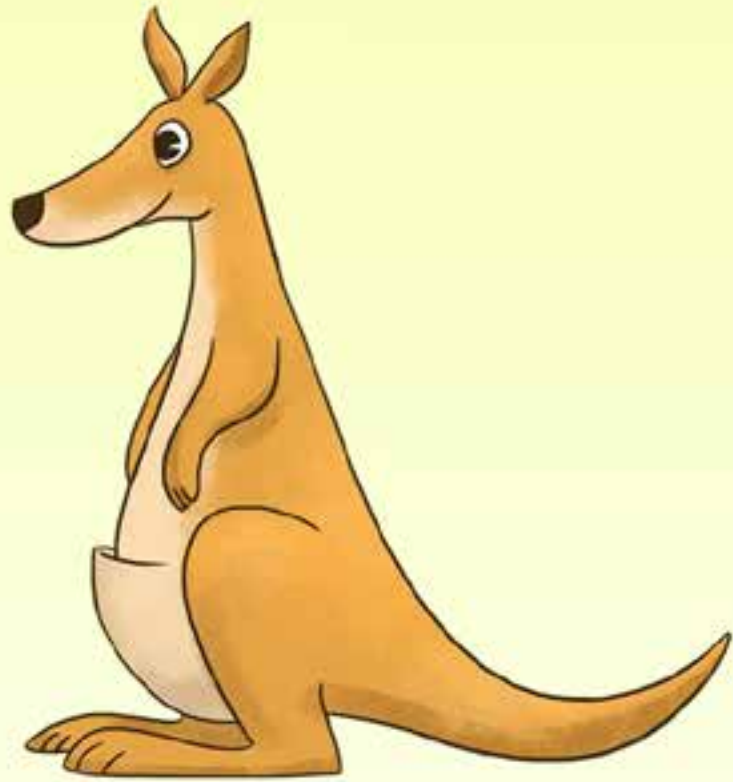


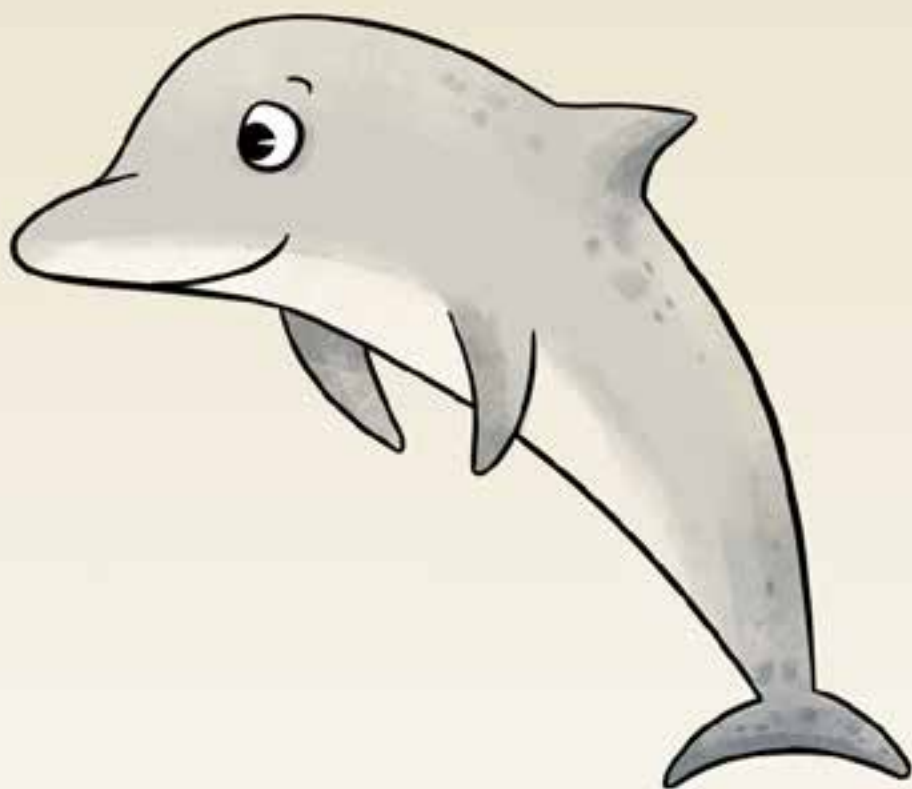




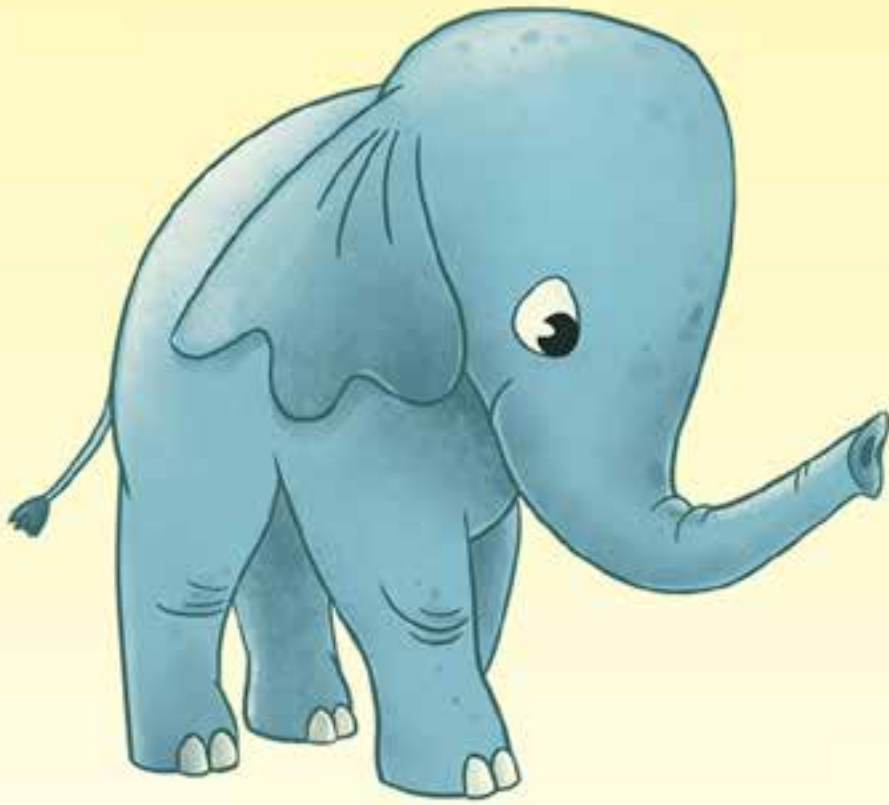
Bb

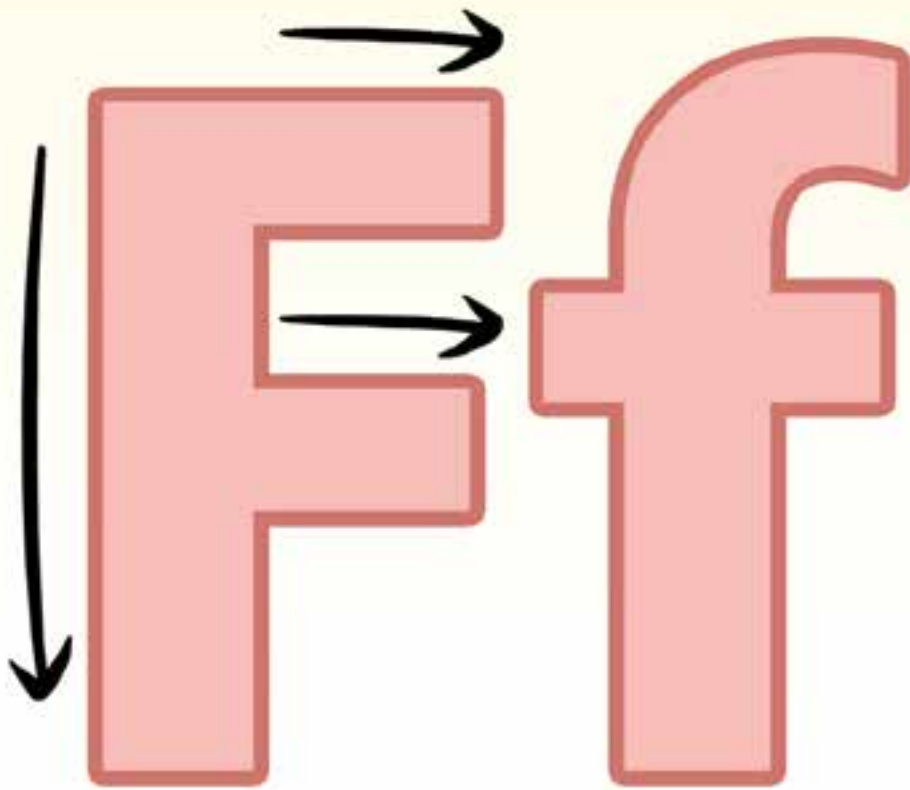
The letters 'B' and 'b' are shown in a large, bold, orange font with a dark brown outline. Black arrows indicate the stroke order for writing each letter. For the uppercase 'B', a long arrow points down the left vertical stroke, and two curved arrows show the path of the top and bottom bowls. For the lowercase 'b', a curved arrow shows the path of the bowl, and a long arrow points down the vertical stem.





Dad







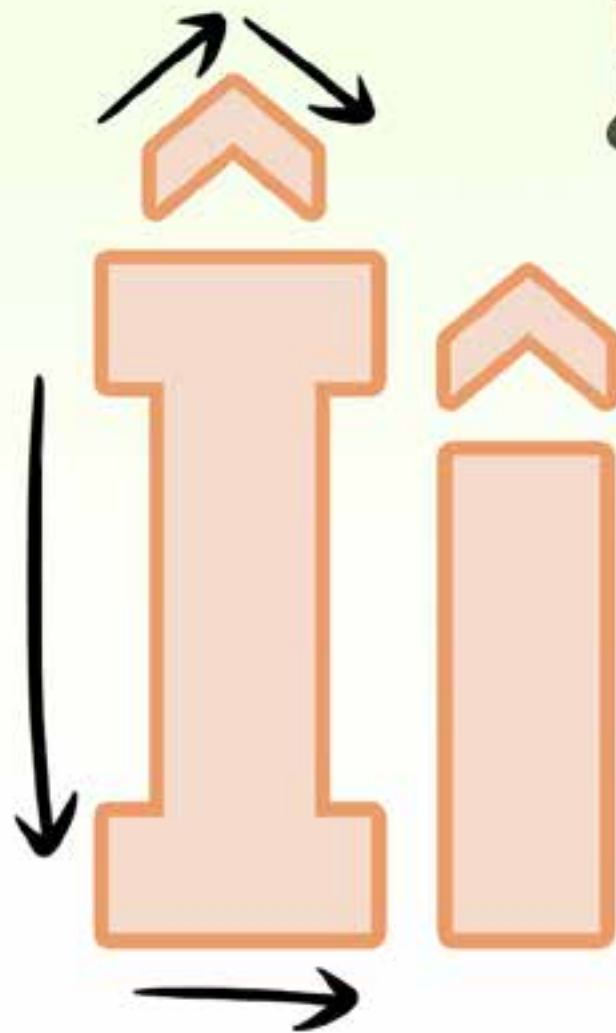


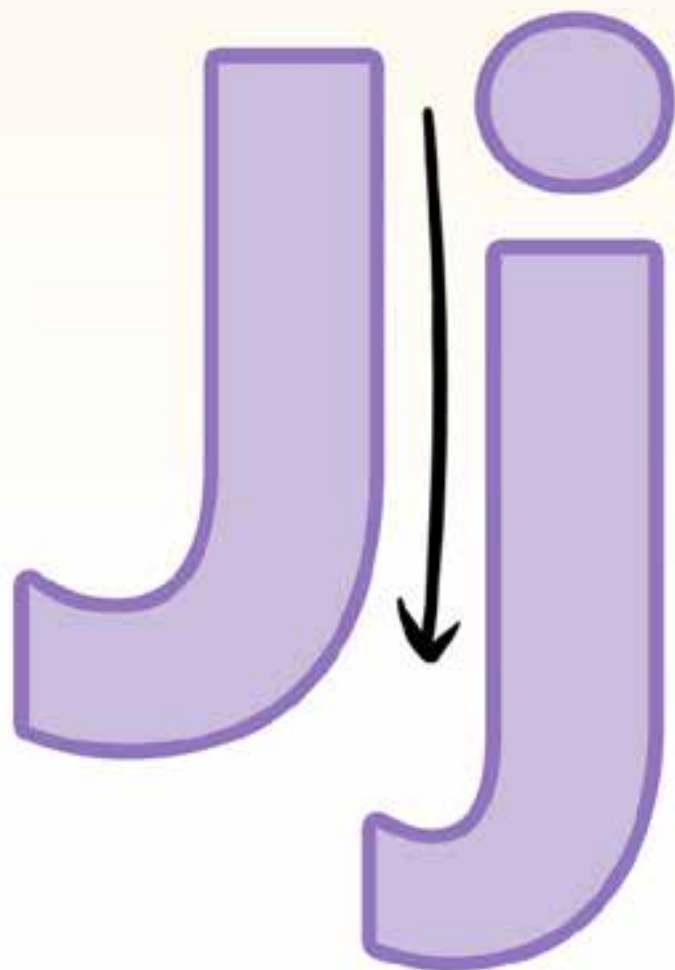
G g

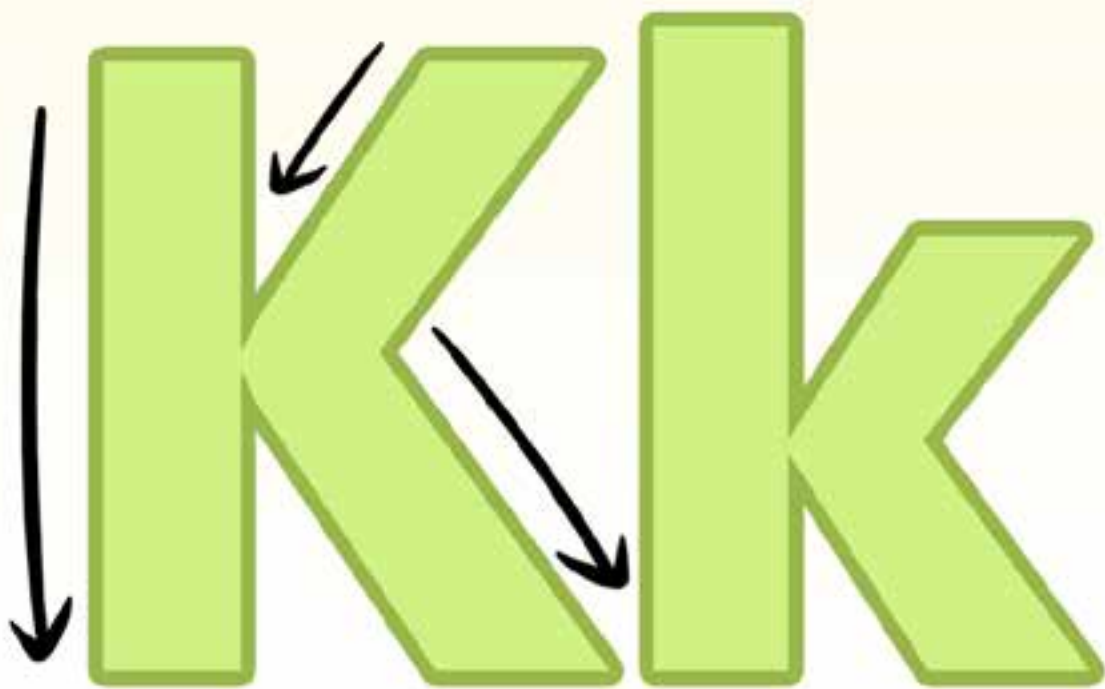
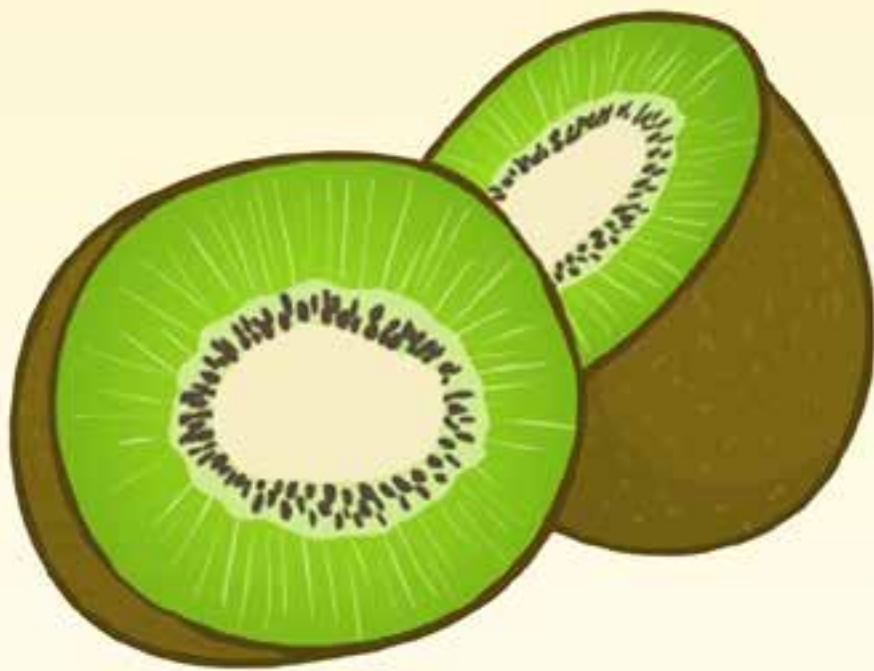


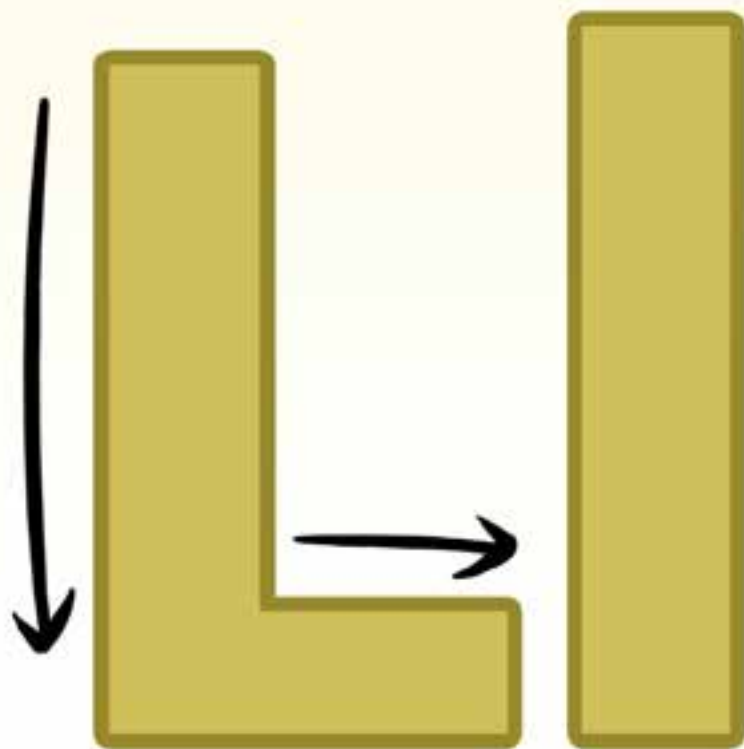
H h







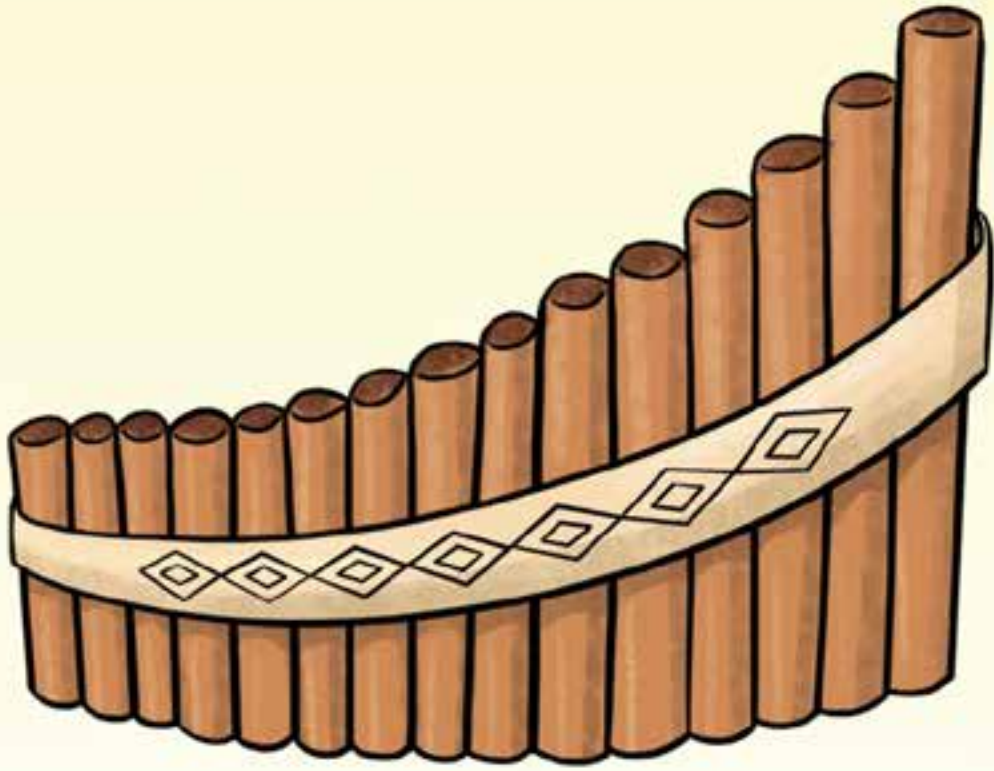






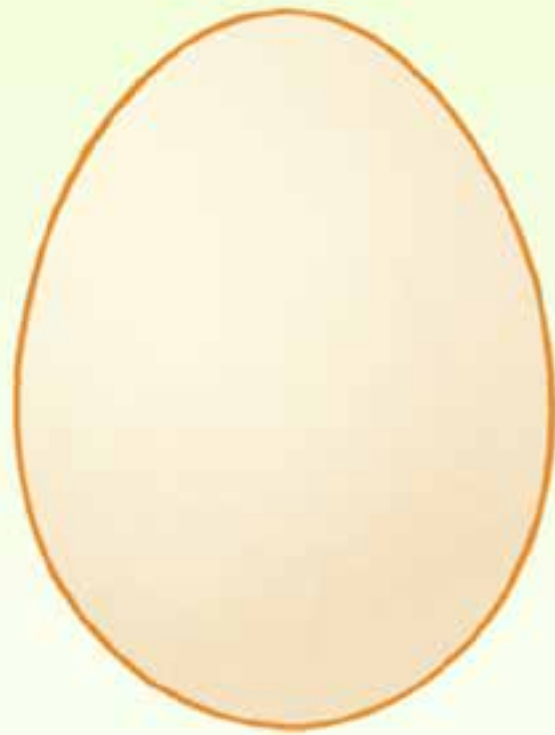
Mm





N n

Arrows indicate the stroke order for writing the uppercase 'N' and lowercase 'n'. For 'N', a vertical arrow points down on the left, and a diagonal arrow points from the top-left to the bottom-right. For 'n', a vertical arrow points down on the left, and a curved arrow shows the path from the top to the bottom and back up.

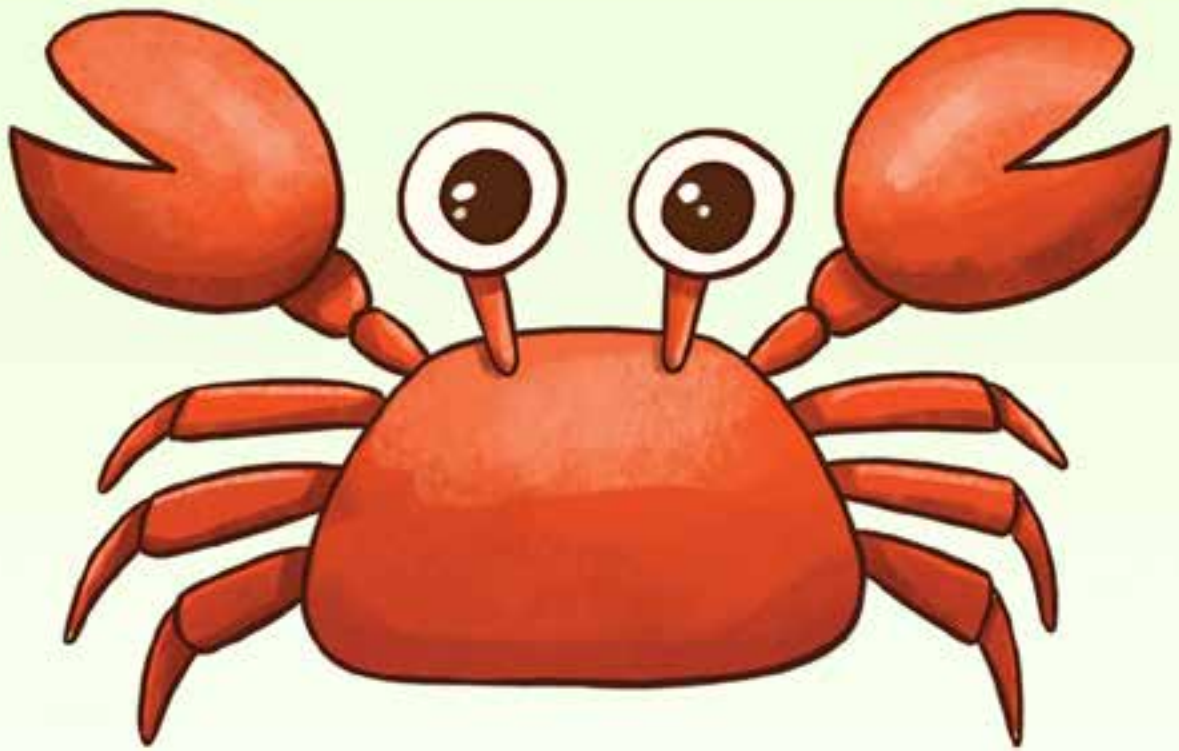




Pip



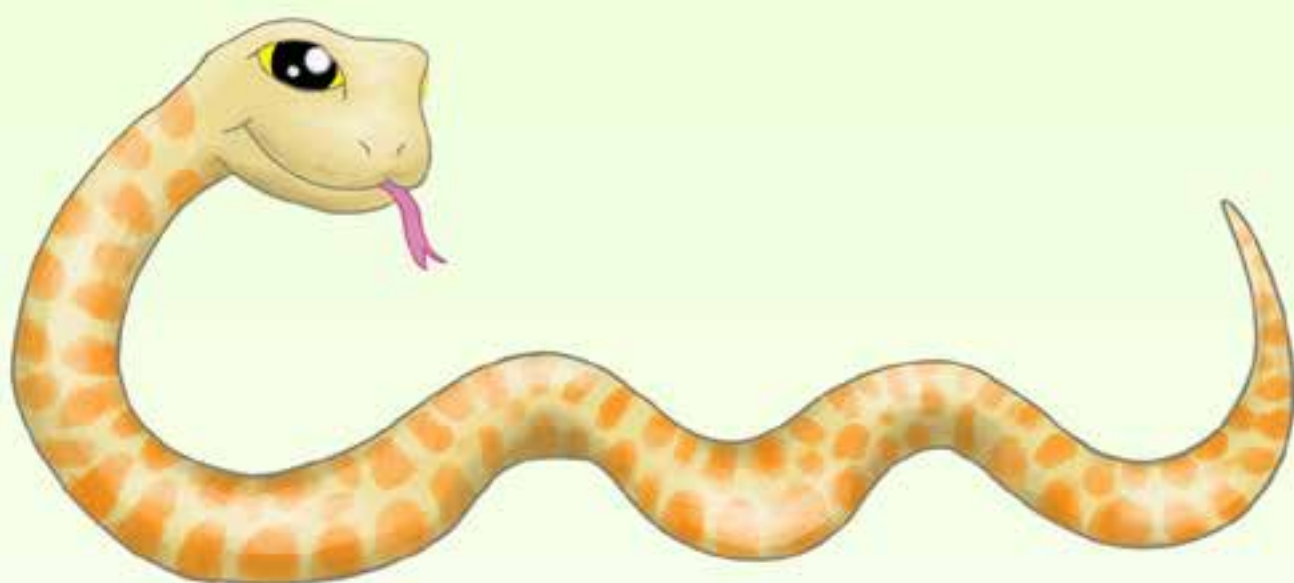
Q q

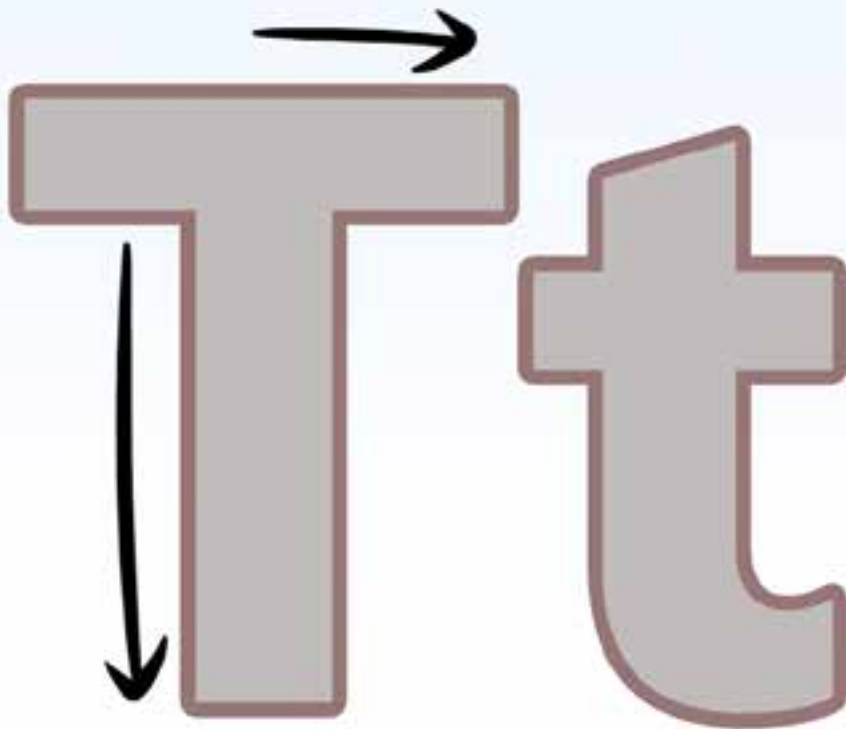


Rr

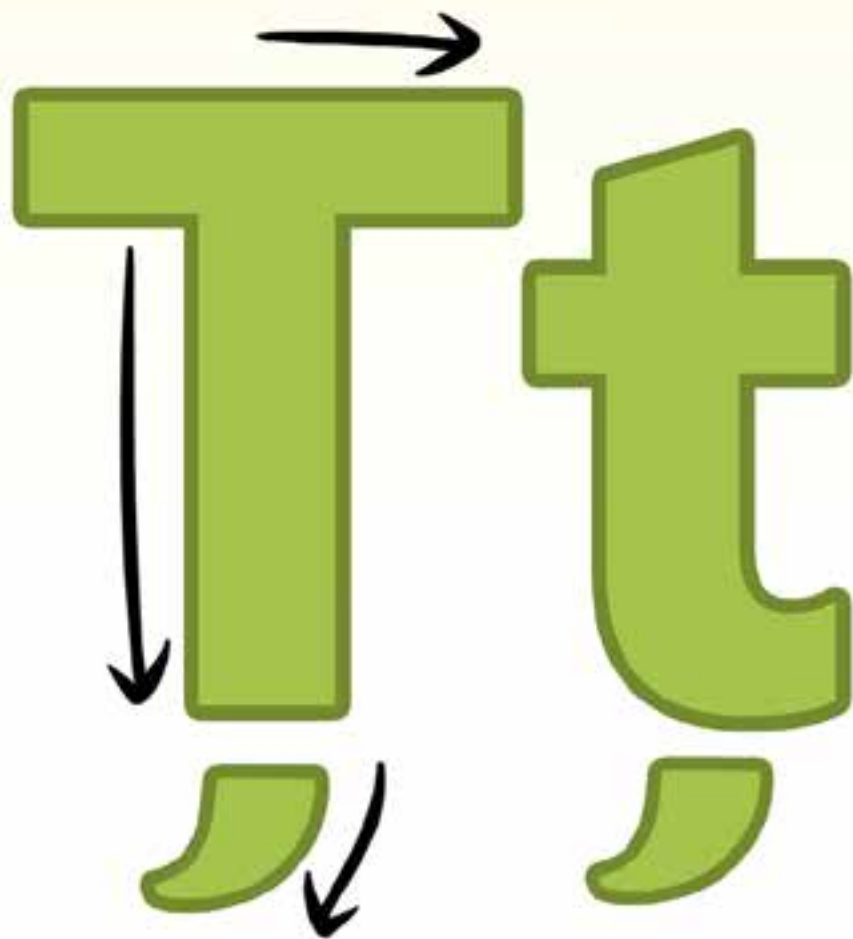


Ss











U u





W w



