



$1 \times 8 = \square$

$2 \times 8 = \square$

$3 \times 8 = \square$

$4 \times 8 = \square$

$5 \times 8 = \square$

$6 \times 8 = \square$

$7 \times 8 = \square$

$8 \times 8 = \square$

$9 \times 8 = \square$

$10 \times 8 = \square$



$1 \times 9 = \square$

$2 \times 9 = \square$

$3 \times 9 = \square$

$4 \times 9 = \square$

$5 \times 9 = \square$

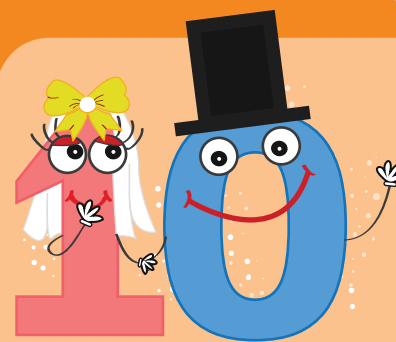
$6 \times 9 = \square$

$7 \times 9 = \square$

$8 \times 9 = \square$

$9 \times 9 = \square$

$10 \times 9 = \square$



$1 \times 10 = \square$

$2 \times 10 = \square$

$3 \times 10 = \square$

$4 \times 10 = \square$

$5 \times 10 = \square$

$6 \times 10 = \square$

$7 \times 10 = \square$

$8 \times 10 = \square$

$9 \times 10 = \square$

$10 \times 10 = \square$